

LIVESTOCK SECTOR BRIEF

CÔTE D'IVOIRE

Food and Agriculture Organization
of the United Nations • **FAO**

Livestock Information, Sector Analysis
and Policy Branch • **AGAL**



March 2005

TABLE OF CONTENTS

Preface	ii
1. General Information.....	1
Human population, land and socio-economics	1
Human population trends	2
Trends in agricultural land	2
2. Livestock Resources.....	2
Livestock populations	2
Contribution of different species to total livestock units	3
Selected indicators of livestock resources	3
Agro-ecological zones and densities of livestock species (2000)	4
3. Livestock Production	6
Trends in annual production of meat, milk and eggs	6
Composition of total meat production	6
Carcass weights and percentage slaughtered by species.....	7
Milk yields and proportion of dairy animals.....	7
Egg yields and proportion of laying birds.....	7
Estimated feed used for livestock production.....	8
Trends in annual per capita production of meat, milk and eggs.....	8
4. Consumption of Meat, Milk and Eggs	9
Trends in annual consumption of meat, milk and eggs	9
Trends in annual per capita consumption of meat, milk and eggs.....	9
Production versus consumption for meat, milk and eggs (2002)	10
5. Trade in Livestock and Livestock Products.....	11
Trade in agricultural and livestock products.....	11
Export/import 'dependency' for livestock products	11
Trade in live animals	12
Trade in livestock products	13
6. Livestock Health	14
Total number of cases/outbreaks of selected diseases reported in all susceptible species	14
7. References and Further Reading.....	15

Data contained in this Livestock Sector Brief are taken from official sources. Official sources are no guarantee for data accuracy and the figures reported in this brief should be taken as indicative and not be used for official purposes. The Food and Agriculture Organization of the United Nations assumes no responsibility for its accuracy, completeness and coherence.

PREFACE

The Livestock Sector Briefs (LSB) are intended to provide a quick overview and an approximate outlook for the livestock sector of the respective country using figures and quantitative indicators originating from official sources. The LSBs are complemented by a synthesis of policy documents available in the public domain.

The majority of the data in the LSBs refer to the country as a whole and come from FAOSTAT, which is available on the internet (<http://faostat.external.fao.org/default.jsp>). FAO, as part of its mandate, compiles information and data on various aspects of food and agriculture from all countries. The data are analysed and interpreted to support FAO's programmes and activities and, in accordance with the basic functions of the Organization, they are disseminated to the public through publications, CD-ROM, diskettes and the Internet. The country level data are officially submitted to the Division for Statistics of FAO (ESS) by various ministries of the respective countries. For details of data collection procedures see <http://faostat.fao.org/abcdq/about.htm>. The figures submitted often display inconsistencies across ministries, for example reported meat production does not always match reported meat consumption when taking into account imports and exports. FAO tries to reconcile the figures, to the effect that FAO statistics may differ from those originally submitted.

The LSBs utilise FAOSTAT data from the following domains: human population, land use, agriculture production, food supply and agricultural and food trade. These are used to derive a standard set of indicators that can quickly be compared across the countries.

Data on the economy are from the World Bank's World Development Indicators CD-Rom, which is also available online <http://www.worldbank.org/data/> and is updated every year. Animal health data are taken from the Office International des Epizooties (OIE) HANDISTATUS II <http://www.oie.int/hs2/>. These are official data supplied by member nations.

For any feedback and comment, please contact:

Pius Chilonda - Livestock Information Analyst
Livestock Information, Sector Analysis and Policy Branch
Animal Production and Health Division
Food and Agricultural Organisation
Viale delle Terme di Caracalla
00100 Rome, Italy

Tel: 00 39 06 57056691
Fax: 00 39 06 57055749
Email: Pius.Chilonda@fao.org

1. GENERAL INFORMATION

Human population, land and socio-economics

Human population	16.4 million
Population density on total land	51.5 persons/sqkm
Annual growth rate (1990-2000)	2.1 %
Population in agriculture	7.7 million
As proportion of total population	47.0 %
Total land area	318,000 sqkm
Agricultural land	199,000 sqkm
As proportion of total land	62.6 %
Land under pasture	130,000 sqkm
As proportion of total land	65.3 %
Irrigated area	730 ha
Agricultural land per 100 people	122 ha
Agricultural land per 100 people in agriculture	259 ha
Agricultural population density on agricultural land	38.7 persons/sqkm
GDP ¹	12,810 million US\$
GDP annual growth rate (1990-2000)	2.3 %
GDP per capita/year ¹	776 US\$
GDP per capita annual growth rate (1990-2000)	-0.4 %
Agriculture, GDP	3,353 million US\$
As proportion of total GDP	26.2 %
Livestock, GDP ¹	243 million US\$
As proportion of agricultural GDP	7.2 %
Human development Rank	163 Ranking ²
Human development index	0.399
Poverty incidence ³	
Total	na %
Urban	na %
Rural	na %

¹Constant 1995 US\$ ² The HDI rank is determined using HDI values to the fifth decimal point – from 177 countries, as compiled by the UNDP; ³ National poverty line; na: not available

Source: World Bank (2002); UNDP (2004); FAO (2005a)

Human population trends

Values expressed in 1,000

Population segment	Year				Annual growth rate (%)	
	1980	1990	2000	2002	1980-1990	1990-2000
Total	8,427	12,505	15,827	16,365	4.0	2.4
Rural	5,500	7,522	8,925	9,097	3.2	1.7
Urban	2,927	4,983	6,902	7,268	5.5	3.3

Source: FAO (2005a)

Trends in agricultural¹ land

Values expressed in sqkm

Land type	Year				Annual growth rate (%)	
	1980	1990	2000	2002	1980-1990	1990-2000
Total	172,550	189,300	199,000	199,000	0.9	0.5
Cropped ²	42,550	59,300	69,000	69,000	3.4	1.5
Pastures	130,000	130,000	130,000	130,000	0.0	0.0

¹The sum of area under arable land, permanent crops and permanent pastures

²Arable and permanent crops

Source: FAO (2005a)

2. LIVESTOCK RESOURCES

Livestock populations

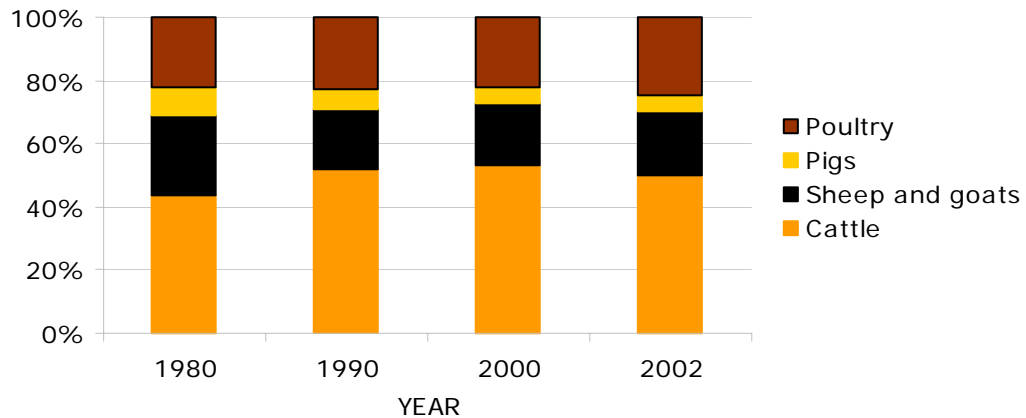
Values expressed in 1,000

Species	Year				Annual growth rate (%)	
	1980	1990	2000	2002	1980-1990	1990-2000
Cattle	666	1,108	1,409	1,341	5.2	2.4
Sheep and goats	1,920	2,022	2,585	2,713	0.5	2.5
Pigs	315	360	336	350	1.3	-0.7
Poultry	17,000	24,120	29,400	32,625	3.6	2.0
Total LUs	758	1,069	1,324	1,338	3.5	2.2

LU: *Livestock unit*; **conversion factors:** cattle (0.50), sheep and goats (0.10), pigs (0.20) and poultry (0.01)

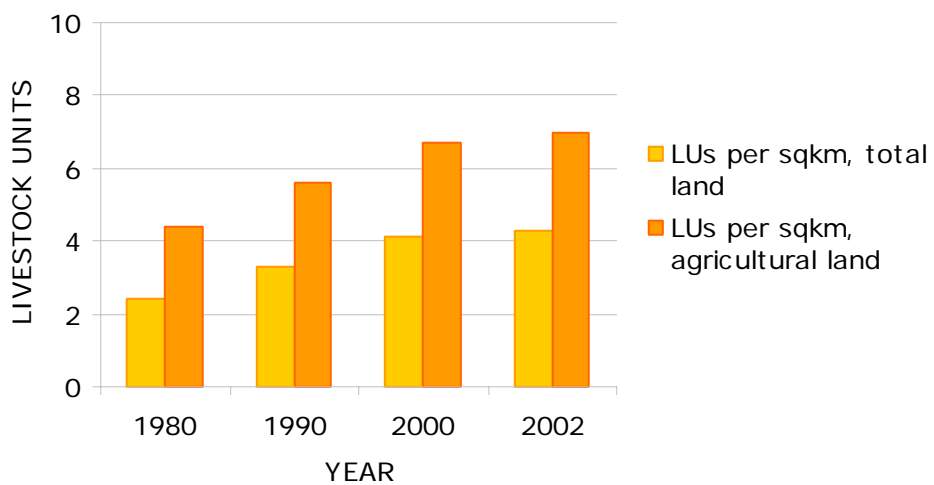
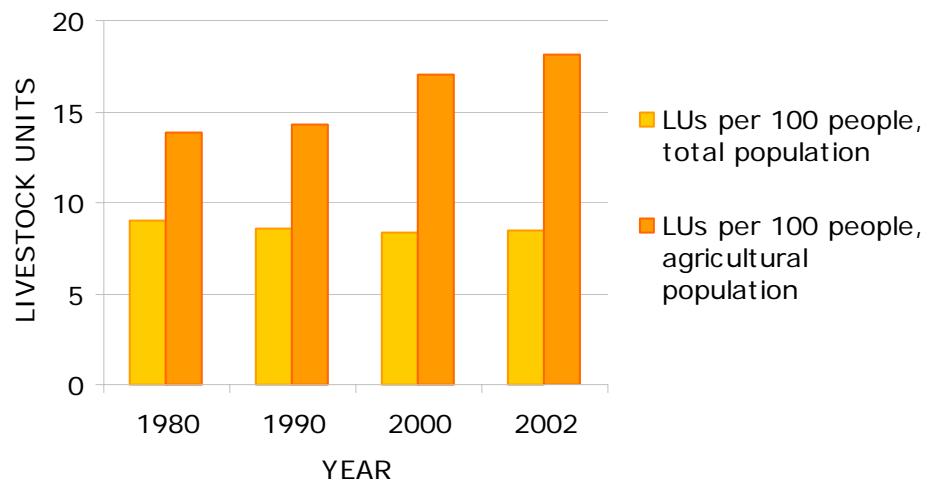
Source: FAO (2005a)

Contribution of different species to total livestock units



Source: FAO (2005a)

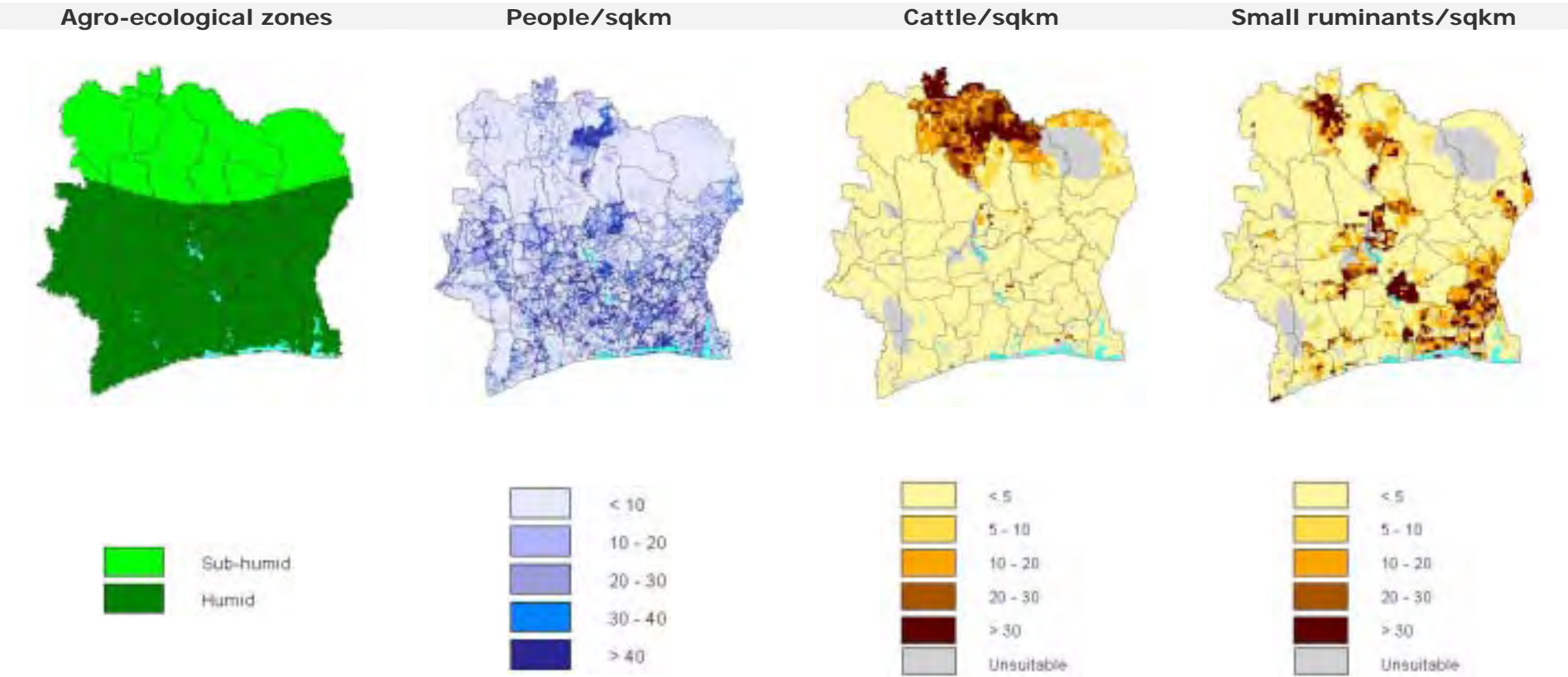
Selected indicators of livestock resources



Source: FAO (2005a)

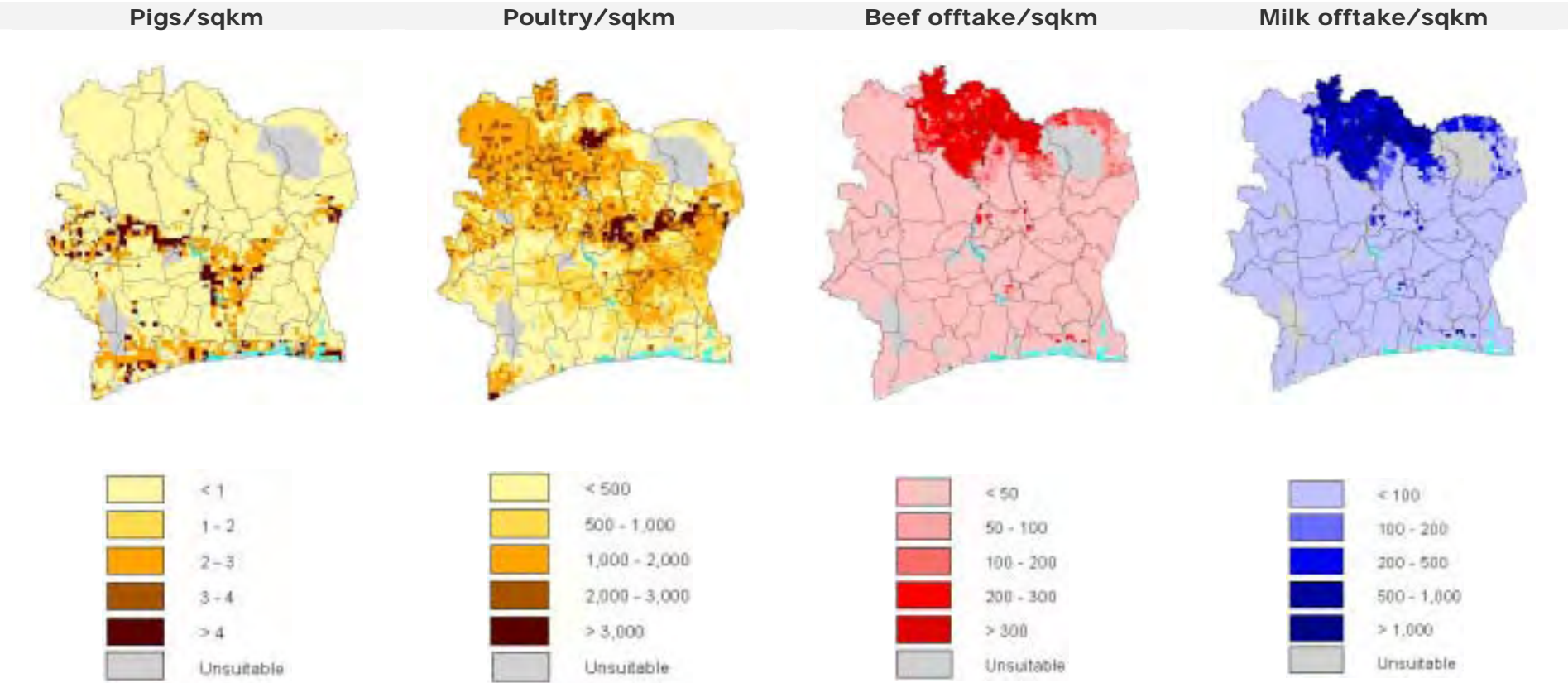
Agro-ecological zones and densities of livestock species (2000)

Density calculated on total land area¹



¹Densities for livestock populations and production are based on total land suitable for livestock production

Source: FAO (2001); LandScan (2002), FAO (2005b)



Source: FAO (2005b); FAO (2003)

3. LIVESTOCK PRODUCTION

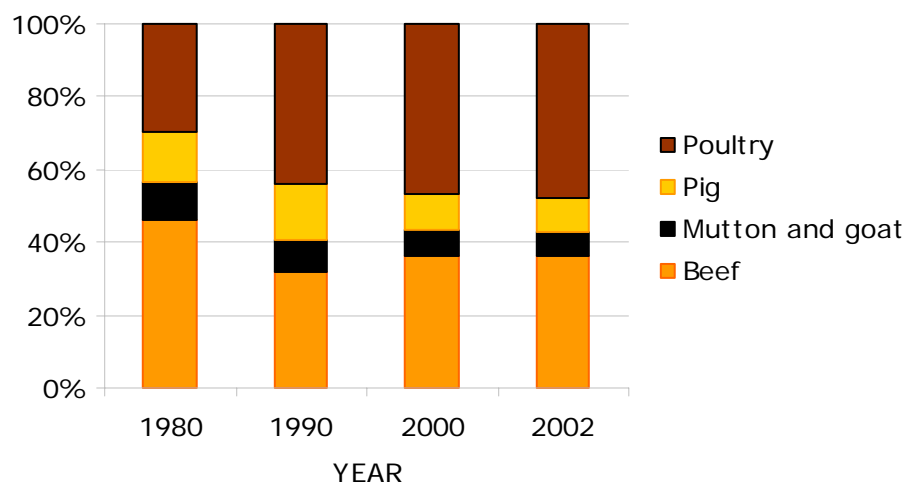
Trends in annual production of meat, milk and eggs

1,000 metric tonnes

Product	Year				Annual growth rate (%)	
	1980	1990	2000	2002	1980-1990	1990-2000
Meat, total	120	124.7	161.9	173.5	0.4	2.6
Beef	42.5	31	48.3	52.5	-3.1	4.5
Mutton and goat	9.4	8.5	9.5	9.4	-1.0	1.1
Pig	12.6	14.4	13.4	14.3	1.3	-0.7
Poultry	27.5	42.7	62.7	69.3	4.5	3.9
Milk, total	11.7	17.6	24.7	25.9	4.2	3.5
Eggs, total	9.7	13.8	33.8	31.2	3.6	9.3

Source: FAO (2005a)

Composition of total meat production



Source: FAO (2005a)

Carcass weights and percentage slaughtered by species

Species/year	Carcass weight (kg/animal)				Percentage slaughtered/year			
	1980	1990	2000	2002	1980	1990	2000	2002
Cattle	137.0	137.0	165.7	139.3	46.5	20.5	20.7	28.1
Sheep	10.0	10.0	10.3	10.3	46.6	40.4	32.7	32.7
Goat	10.0	10.0	10.0	10.0	52.2	44.5	40.6	36.1
Pigs	50.0	50.0	50.0	50.0	80.0	80.0	80.0	81.7
Poultry	1.1	1.1	1.1	1.1	147.1	160.9	193.9	193.1

Source: FAO (2005a)

Milk yields and proportion of dairy animals

Species/year	Milk yield (kg/year)				Percentage milked			
	1980	1990	2000	2002	1980	1990	2000	2002
Cattle	124	149	132	132	14.1	10.6	13.3	14.7

Source: FAO (2005a)

Egg yields and proportion of laying birds

Species/year	Eggs (kg/year)				Percentage laying			
	1980	1990	2000	2002	1980	1990	2000	2002
Chicken	1.4	1.4	1.4	1.3	40.6	41.5	80.8	75.4

Source: FAO (2005a)

Estimated feed used for livestock production

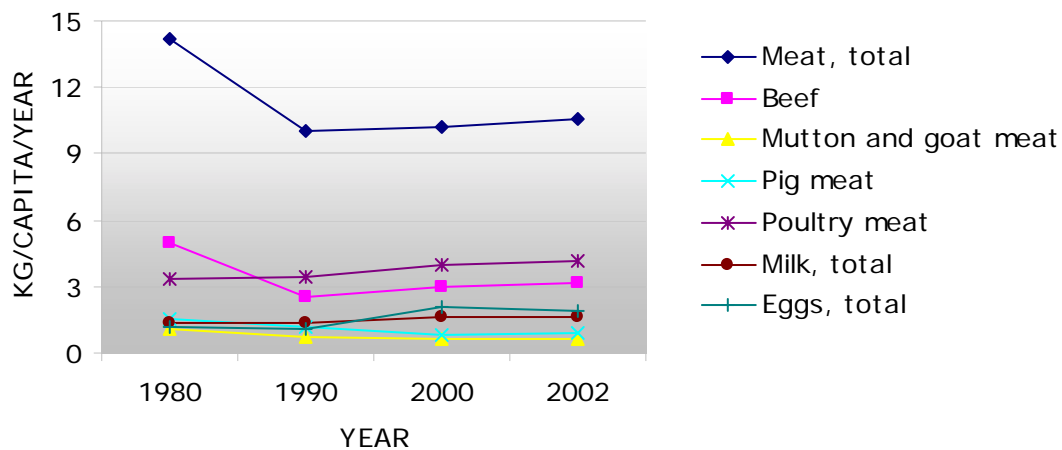
1,000 metric tonnes

Product	Year				Annual growth rate (%)	
	1980	1990	2000	2002	1980-1990	1990-2000
Maize	39.9	49.9	70.7	67.3	2.3	3.6
Barley						
Sorghum	6.0	7.0	8.2	8.5	1.6	1.5
Millet						
Wheat						
Brans	42.9	64.3	88.9	84.8	4.1	3.3
Rice Paddy, equivalent	0.0	16.7	100	133.3		19.6
Roots and Tuber, dry equivalent	33.9	44.2	53	53.6	2.7	1.8
Pulses						
Oil crops						

Blanks represent no data

Source: FAO (2005a)

Trends in annual per capita production of meat, milk and eggs



Source: FAO (2005a)

4. CONSUMPTION OF MEAT, MILK AND EGGS

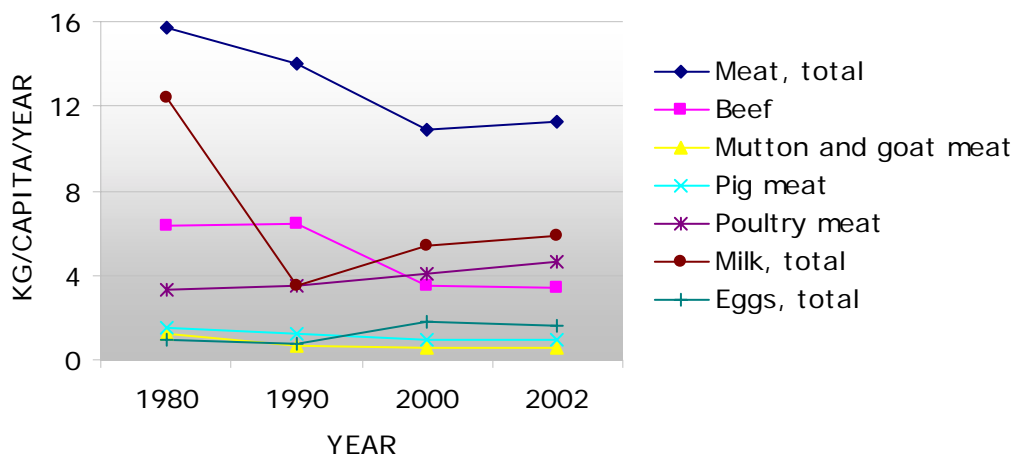
Trends in annual consumption of meat, milk and eggs

1,000 metric tonnes

Product	Year				Annual growth rate (%)	
	1980	1990	2000	2002	1980-1990	1990-2000
Meat, total	132.2	174.8	173	184.2	2.8	-0.1
Beef	53	79.4	55.3	56.3	4.1	-3.6
Sheep and goat	10.3	8.7	9.6	9.5	-1.6	0.9
Pig	13	15.3	14.2	15.2	1.7	-0.8
Poultry	27.9	43.2	65.1	75.1	4.5	4.2
Milk, total	104.6	44.3	85.4	96.2	-8.2	6.8
Eggs, total	7.8	10.5	28.6	25.8	3.0	10.6

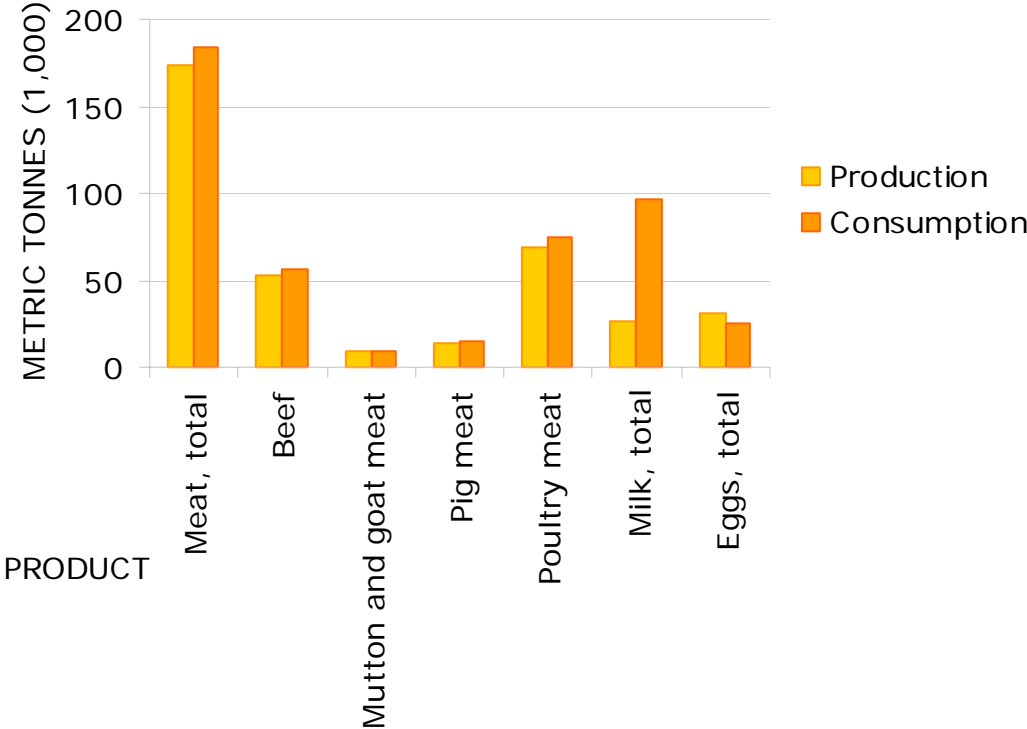
Source: FAO (2005a)

Trends in annual per capita consumption of meat, milk and eggs



Source: FAO (2005a)

Production versus consumption for meat, milk and eggs (2002)



Source: FAO (2005a)

5. TRADE IN LIVESTOCK AND LIVESTOCK PRODUCTS

Trade in agricultural and livestock¹ products

Values in million US\$

Product	Exports				Imports			
	1980	1990	2000	2002	1980	1990	2000	2002
Total	3,561	3,421	4,211	5,641	4,190	2,927	3,471	3,558
Agricultural	1,981	1,613	1,910	3,007	486	424	384	462
% agricultural	55.6	47.2	45.4	53.3	11.6	14.5	11.1	13.0
Livestock	3	5	11	12	183	137	111	80
% livestock	0.1	0.1	0.3	0.2	4.4	4.7	3.2	2.2

¹Total trade in goods and services expressed in current US\$. Source: World Bank (2002)
Agricultural trade refers to all agricultural products, while livestock trade refers to trade in livestock products and live animals. Source: FAO (2005b)

Export/import 'dependency' for livestock products

Product	Exports as percentage of production				Imports as percentage of consumption			
	1980	1990	2000	2002	1980	1990	2000	2002
Meat, total	0.12	0.00	0.27	0.04	9.21	29.19	6.15	5.87
Beef	0.32	0.00	0.01	0.09	20.07	62.11	12.76	7.07
Sheep and goat	0.04	0.00	0.00	0.00	8.01	2.09	0.86	0.83
Pig	0.02	0.00	0.01	0.02	1.99	5.62	4.47	5.73
Poultry	0.01	0.00	0.00	0.03	1.30	1.30	3.76	7.78
Milk, equivalent	27.17	53.48	241.79	120.66	162.55	297.38	144.67	106.55
Eggs, total	0.27	0.08	0.09	0.04	0.31	0.54	0.26	0.09

Source: FAO (2005a)

Product	Net exports as percentage of production				Net imports as percentage of consumption			
	1980	1990	2000	2002	1980	1990	2000	2002
Meat, total	0.00	0.00	0.00	0.00	9.10	29.19	5.90	5.83
Beef	0.00	0.00	0.00	0.00	19.82	62.11	12.75	6.98
Sheep and goat	0.00	0.00	0.00	0.00	7.97	2.09	0.86	0.83
Pig	0.00	0.00	0.00	0.00	1.96	5.62	4.46	5.71
Poultry	0.00	0.00	0.00	0.00	1.28	1.30	3.76	7.75
Milk, equivalent	0.00	0.00	0.00	0.00	159.51	276.12	74.63	74.04
Eggs, total	0.02	0.00	0.00	0.00	0.00	0.44	0.16	0.05

Source: FAO (2005a)

Trade in live animals

Species	1980			1990			2000			2002		
	Export	Import	Net trade	Export	Import	Net trade	Export	Import	Net trade	Export	Import	Net trade
Quantities (count)												
Cattle		225,000	-225,000		93,281	-93,281		146,477	-146,477		89,000	-89,000
Sheep and goats	0	368,356	-368,356	0	241,002	-241,002	4	195,422	-195,418	0	138,000	-138,000
Pigs		0	0		1	-1		0	0		0	0
Poultry (1,000)	0	3,500	-3,500	0	1,436	-1,436	11	1,815	-1,804	64	1,635	-1,571
Value (1,000 US\$)												
Cattle		67,000	-67,000		35,000	-35,000		52,000	-52,000		31,200	-31,200
Sheep and goats	0	15,000	-15,000	0	14,400	-14,400	21	14,500	-14,479	0	9,100	-9,100
Pigs		0	0		1	-1		0	0		0	0
Poultry (1,000)	0	2,204	-2,204	0	1,300	-1,300	164	704	-541	117	697	-580
Total	0	84,204	-84,204	0	50,701	-50,701	184	67,204	-67,020	117	40,997	-40,880

Net trade: Exports less Imports

Blanks represent no data

Source: FAO (2005a)

Trade in livestock products

Product	1980			1990			2000			2002		
	Export	Import	Net trade	Export	Import	Net trade	Export	Import	Net trade	Export	Import	Net trade
Quantities (metric tonnes)												
Meat, total	150	12,176	-12,026	0	51,011	-51,011	435	10,637	-10,203	71	10,812	-10,741
Beef	135	10,638	-10,503	0	49,335	-49,335	7	7,057	-7,051	50	3,979	-3,930
Mutton and goat	4	822	-818	0	182	-182	0	82	-82	0	79	-79
Pig	3	258	-255	0	862	-862	1	633	-632	3	872	-869
Poultry	4	361	-357	0	562	-562	2	2,453	-2,450	18	5,843	-5,825
Other	4	97	-101	0	69	-69	424	412	-836	1	39	-40
Milk, equivalent	3,178	169,982	-166,803	9,413	131,685	-122,273	59,818	123,563	-63,745	31,265	102,466	-71,200
Eggs, total	26	24	2	11	57	-46	30	75	-45	12	24	-12
Hides and skins	1,420	0	1,420	50	65	-15	37	25	12	197	30	167
Value (1,000 US\$)												
Meat, total	378	27,312	-26,934	0	33,701	-33,701	434	7,999	-7,566	69	8,493	-8,424
Beef	313	23,202	-22,889	0	31,359	-31,359	12	5,212	-5,201	41	3,107	-3,066
Mutton and goat	21	2,067	-2,046	0	748	-748	0	182	-182	0	190	-190
Pig	19	1,238	-1,219	0	1,186	-1,186	1	704	-703	5	785	-780
Poultry	25	611	-586	0	328	-328	5	1,505	-1,499	23	4,266	-4,243
Other	0	194	-194	0	80	-80	416	396	-812	0	145	-145
Milk, equivalent	2,082	71,522	-69,440	4,753	51,639	-46,886	10,106	35,046	-24,940	11,334	29,871	-18,537
Eggs, total	90	109	-19	26	376	-350	86	372	-285	38	145	-107
Hides and skins	557	0	557	130	41	89	62	17	45	330	11	319
Total	3,107	98,943	-95,836	4,909	85,757	-80,848	10,689	43,434	-32,746	11,771	38,520	-26,749

Net trade: Exports less Imports

Blanks represent no data

Source: FAO (2005a)

6. LIVESTOCK HEALTH

Total number of cases/outbreaks of selected diseases reported in all susceptible species

Disease	1997	1998	1999	2000	2001	2002	2003
African swine fever	(1996)	(12/1996)	(12/1996)	(12/1996)	(12/1996)	(12/1996)	(12/1996)
Avian Influenza ¹	-	-	-	-	-	-	-
Bluetongue		-	-	-	-	-	-
BSE ²	000	000	000	000	000	000	000
CBPP ³	.../10	184/8	160/11	152/7	203/8	398/5	.../...
Classical swine fever	-	-	-	-	-	-	-
Foot and mouth disease	.../7	.../...	121/1	1,224/3	.../...	(12/2001)	(12/2001)
Lumpy skin disease	85/1	(10/1997)	-	78/3	.../...	(12/2001)	(12/2001)
Newcastle disease	.../...	.../...	.../...	.../...	.../...		...
Peste des petits ruminants	.../7	204/7	31/1	79/2	135/2	(10/2001)	(10/2001)
Rift Valley fever		-	-	-	-	-	-
Rinderpest	(1986)	(1986)	(1986)	(1986)	(1986)	(1986)	(1986)
Sheep and goat pox	418/1	89/4	24/1	...	-	-	-
Swine vesicular disease	-	-	-	-	-	-	-
Vesicular stomatitis	-	-	-	-	-	-	-

¹ Highly pathogenic avian influenza

² Bovine spongiform encephalopathy

³ Contagious bovine pleuropneumonia

no./no. number of cases/outbreaks, ... no information, - disease not reported, 000 disease never reported; (month/year) date of the last reported occurrence of the disease in previous years

Source: OIE (2004)

7. REFERENCES AND FURTHER READING

FAO (2001) Agro-ecological Distributions for Africa, Asia and North and Central America, Consultants' Report. Food and Agriculture Organisation, Rome.

FAO (2003) Cattle and small ruminant production systems in sub-Saharan Africa: a systematic review. Food and Agriculture Organisation, Rome.

FAO (2005a) FAOSTAT data. Food and Agriculture Organisation, Rome.
<http://faostat.external.fao.org/default.jsp> (accessed March, 2005).

FAO (2005b) Global Livestock Production and Health Atlas. Food and Agriculture Organisation, Rome. <http://www.fao.org/ag/aga/glipha/index.jsp> (accessed March, 2005).

LandScan (2002) Global Population Database. Oak Ridge National Laboratory, Oakridge. <http://www.ornl.gov/gist/>

OIE (2004) HANDISTATUS II. Office International des Epizooties, Paris.
<http://www.oie.int/hs2/> (accessed March, 2005).

UNDP (2004). The Human development Reports, United Nations Development Programme, New York. <http://hdr.undp.org/statistics/>

World Bank (2002) The 2002 World Bank development indicators CD-Rom. The World Bank, Washington DC.